



Darley Court  
Troon



Dickie's Fountain; Presented by James Dickie 1891



## Welcome to Darley Court

Darley Court is set off St Meddans Street, Troon, and nestled within easy walking distance of the bustling town centre and seafront. Troon has many local amenities, including schools, a library and a swimming pool. With the train station less than a 3 minute walk, you have easy access north to Glasgow or south to Ayr. Troon also boasts many popular restaurants, bars and boutique shops.

For those who enjoy golf, there are 5 courses nearby, including the world-famous *Royal Troon Golf Club*, which is hosting The Open Championship in July 2024.





For those who enjoy the finer things in life, we've luxury on tap

Gone are the days when kitchens and bathrooms simply served a purpose. Our partnerships with select suppliers ensure these essential living spaces of both sophistication and innovation. With bathrooms and en-suites by Scope, kitchens by Creative Designs in Ayr and appliances by NEFF, we now have several stylish spaces competing to become the heart of your home.

### Kitchen

- Furniture and worktops by German manufacturer Impuls
- 25mm sleek worktops

**IMPULS**  
KÜCHEN

### NEFF appliances:

- Single oven
- Integrated microwave
- 4 zone induction hob - black glass
- Integrated fridge freezer
- Extractor
- Dishwasher
- Washer dryer

**NEFF**

### Bathroom & En-suite

- Armera sanitary ware and chrome taps
- Wall hung vanity unit and basin
- Towel warmer
- Toothbrush charger (en-suite)
- Mirror with LED lighting
- Flooring included

ARMERA 

### Safety & Security

- Intruder alarm for ground floor apartments
- Carbon monoxide detector
- Smoke and heat detectors
- Door entry

### Heating and Comfort

- Energy saving insulation to walls and floors
- Baxi high efficiency boiler
- Wifi enabled heating and hot water controls
- LED downlights

### Features

- Digital aerial
- Media wall with **Gazco e Studio 135R** electric fire with programmable thermostatic Eco remote control
- Gyproc cornicing to lounge



### Parking

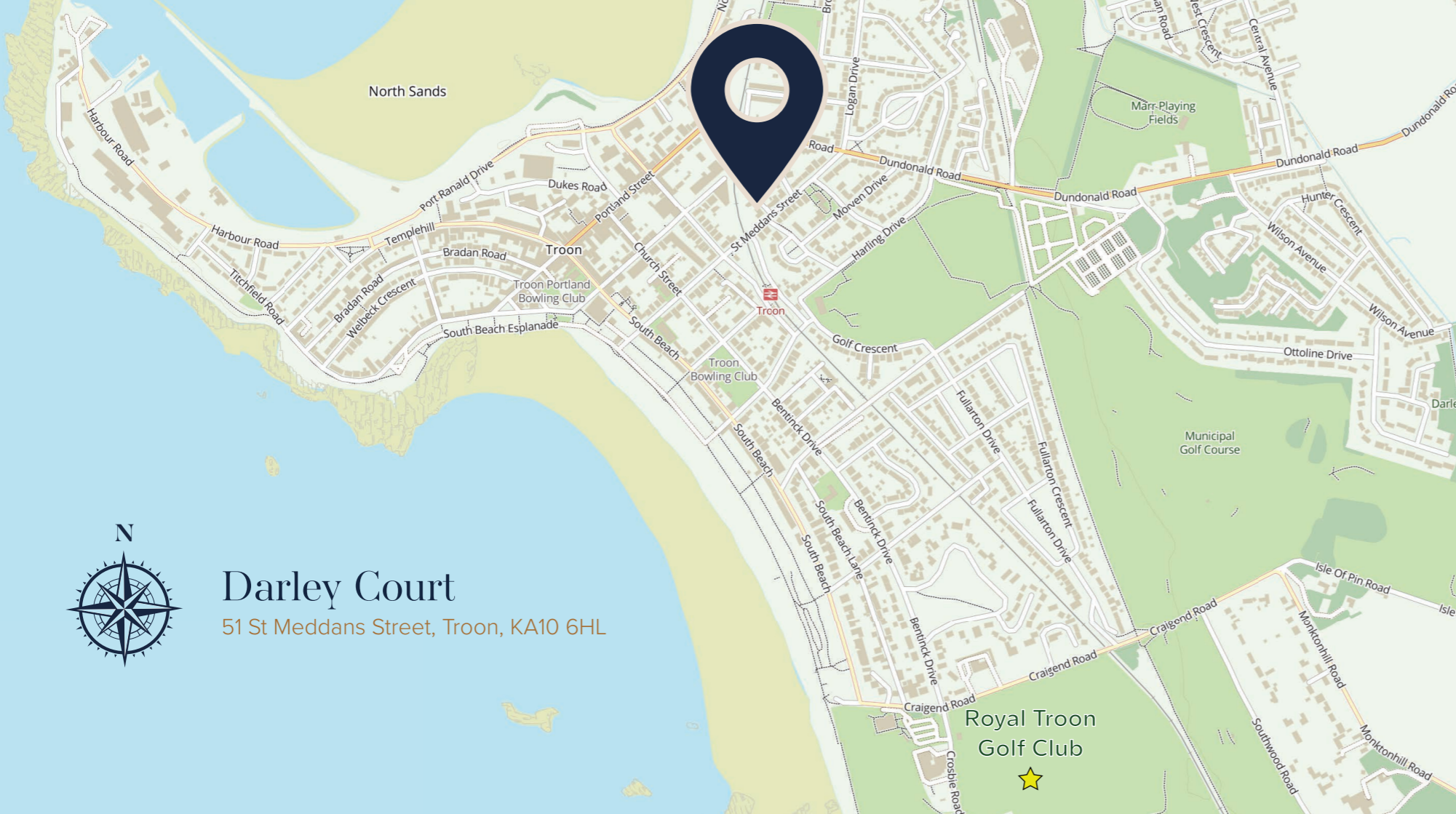
- Allocated parking space
- Electric car charging point

### Build Warranty

- Build warranty provided by **Q Assure** ([www.qassurebuild.co.uk](http://www.qassurebuild.co.uk))



**THE Q POLICY**



# Darley Court

51 St Meddans Street, Troon, KA10 6HL



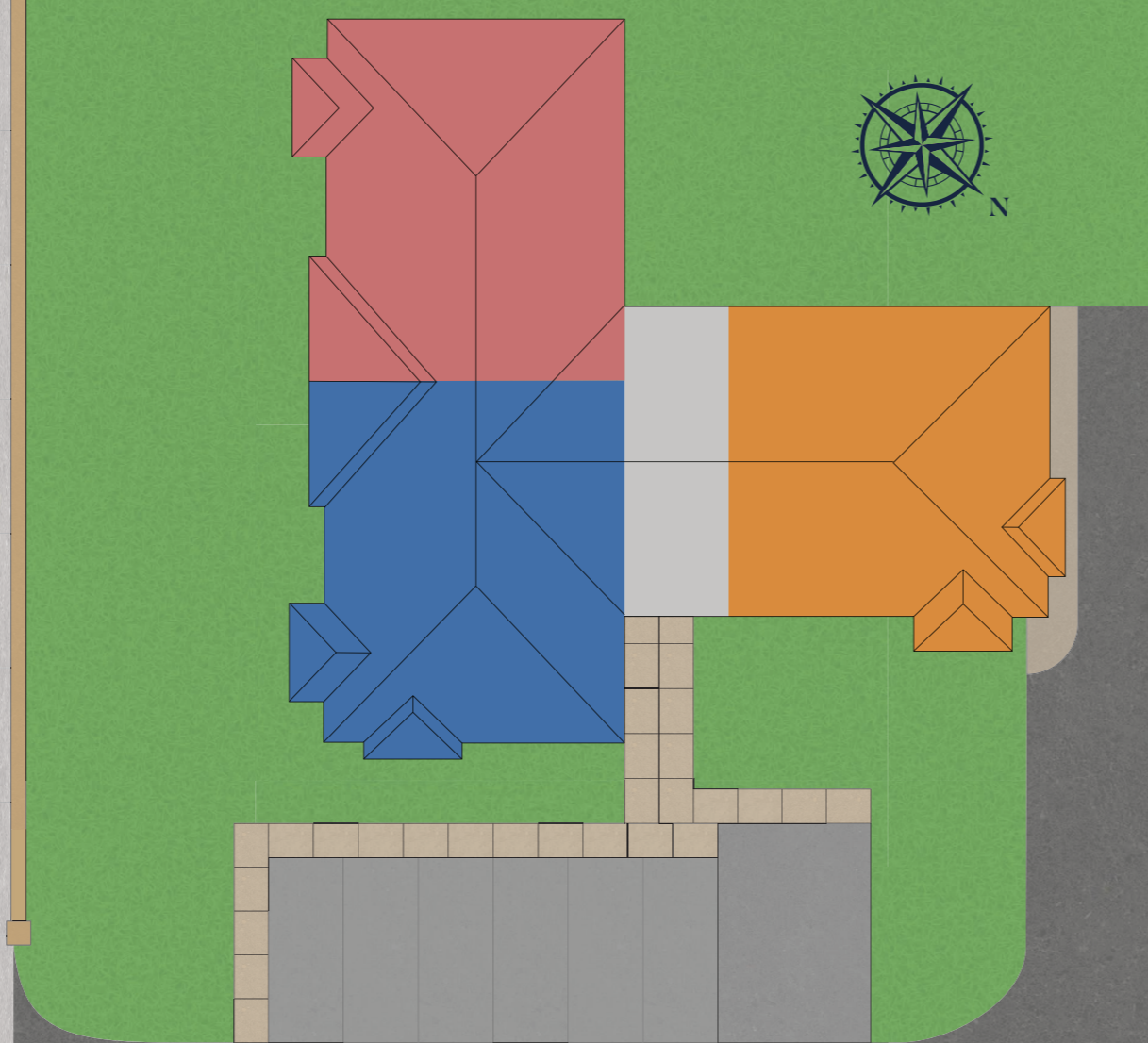
At Dickie & Moore,  
you're very much  
part of our plan.

Whether downsizing or simply in search of the perfect entertaining space, our aim, with this limited range of luxury apartments, was to design with you in mind.

Life is about finding the perfect balance. With traditional brick and stone exteriors giving the way to surprisingly spacious contemporary interiors, we may build like a developer but we will always think like a buyer.

-  The Cavendish  
1, 4 & 7
-  The Welbeck  
2, 5 & 8
-  The Bentinck  
3, 6 & 9

ST MEDDANS STREET



# The Cavendish

1, 4 & 7

## Lounge

17'9" x 13' 9"  
(5.4m x 4.2m)

## Kitchen

11'2" x 8' 6"  
(3.4m x 2.7m)

## Dining Area

11'2" x 8' 10"  
(3.4m x 2.6m)

## Bedroom 1

16'1" x 10'2"  
(4.9m x 3.1m)

## En-Suite

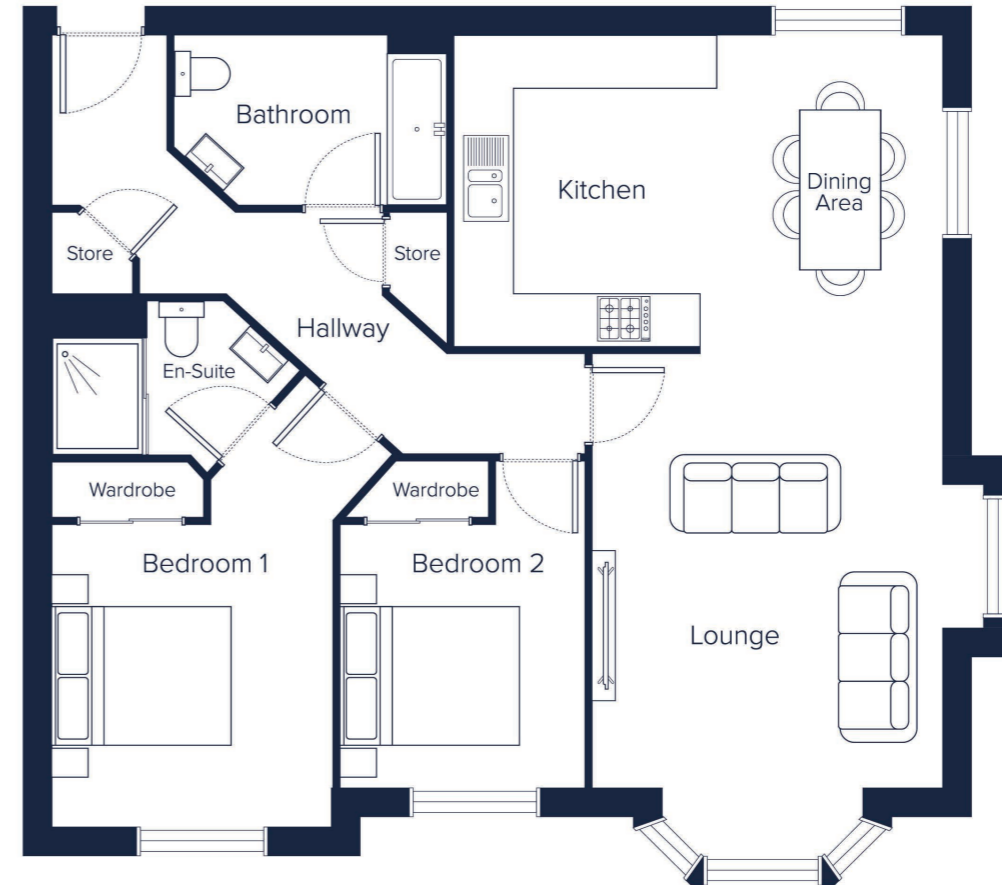
6'3" x 8'6"  
(1.9m x 2.6m)

## Bedroom 2

11'6" x 8'10"  
(3.5m x 2.7m)

## Bathroom

6'3" x 9'10"  
(1.9m x 3m)





# The Welbeck

2, 5 & 8

## Lounge

17'9" x 13' 9"  
(5.4m x 4.2m)

## Kitchen

11'2" x 8' 6"  
(3.4m x 2.7m)

## Dining Area

11'2" x 8' 10"  
(3.4m x 2.6m)

## Bedroom 1

16'1" x 10'2"  
(4.9m x 3.1m)

## En-Suite

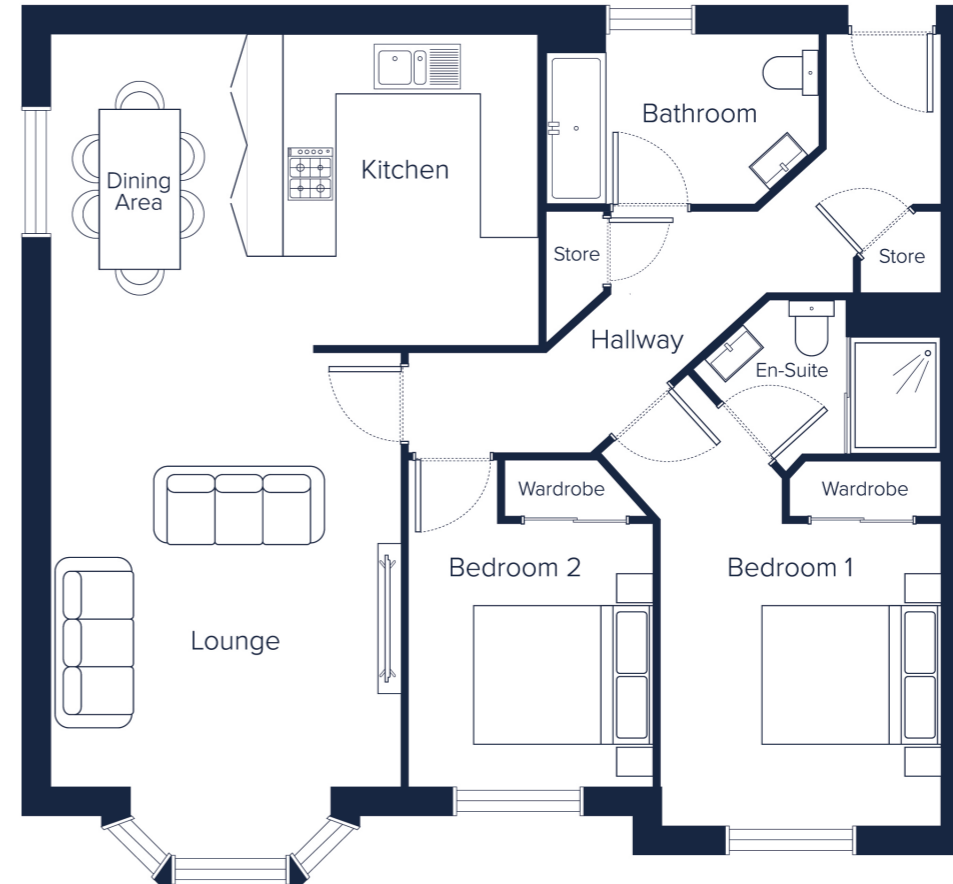
6'3" x 8'6"  
(1.9m x 2.6m)

## Bedroom 2

11'6" x 8'10"  
(3.5m x 2.7m)

## Bathroom

6'3" x 9'10"  
(1.9m x 3m)



# The Bentinck

3, 6 & 9

## Lounge

17'9" x 13' 9"  
(5.4m x 4.2m)

## Kitchen

11'2" x 8' 10"  
(3.4m x 2.7m)

## Dining Area

11'2" x 8' 2"  
(3.4m x 2.5m)

## Bedroom 1

14'5" x 10'2"  
(4.4m x 3.1m)

## En-Suite

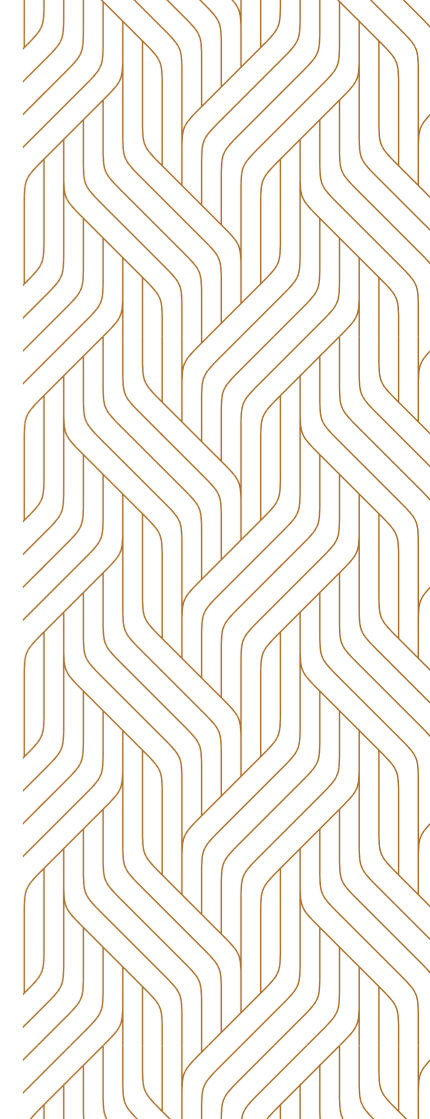
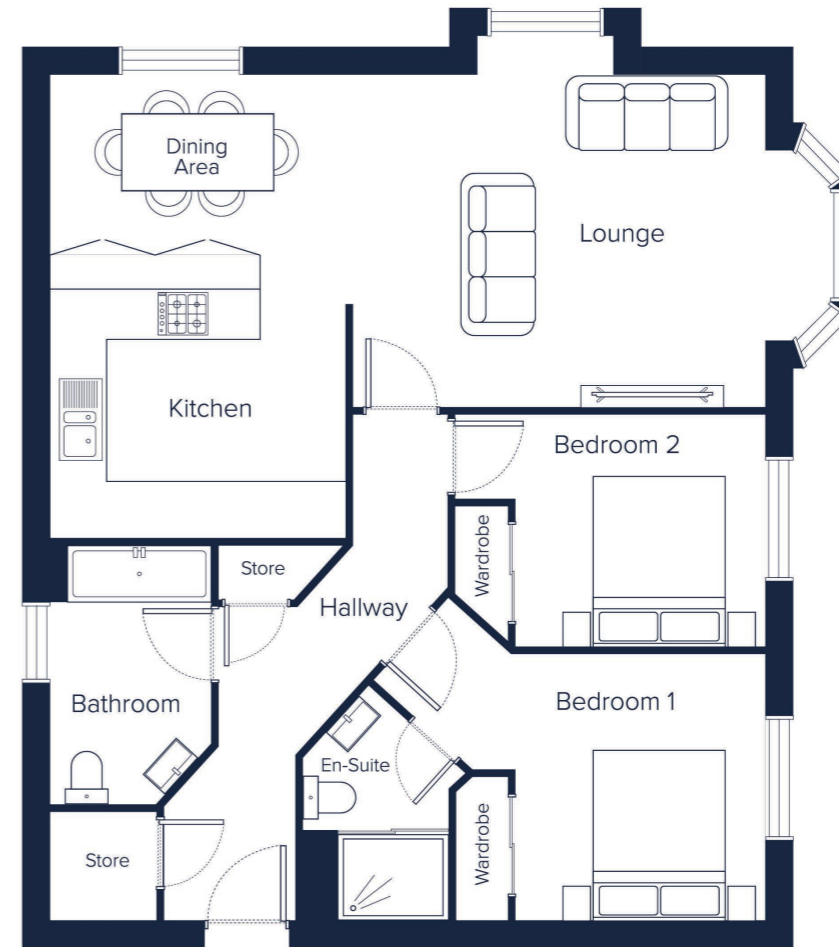
6'3" x 8'6"  
(1.9m x 2.6m)

## Bedroom 2

11'6" x 8'10"  
(3.5m x 2.7m)

## Bathroom

6'3" x 9'10"  
(1.9m x 3m)



## Because building is in our blood

Dickie & Moore love to create something unique every time we build, but two things that always remain constant are our willingness to impress and our eagerness to surprise.

Five generations of house building have taught us to take time to select the perfect location and to consider each property's place in the landscape, to constantly move forward in design and to embrace innovation and, perhaps most importantly, to listen to our customers and to exceed their expectations.

At Dickie & Moore, our hands-on approach means every single step is given careful thought. We are not excited by volume, but rather by attention to the smallest detail, after all, it's often the little things in life that make the biggest difference.

As a family business, we were born to build. We are driven by passion and are incredibly proud of our reputation, and so we are delighted to put our name to every home.





**DICKIE & MOORE**

[www.dickieandmoore.com](http://www.dickieandmoore.com)

4 Orbital Court, East Kilbride, Glasgow, G74 5PH

IMPORTANT NOTICE TO CUSTOMERS: The Consumer Protection from Unfair Trading Regulations 2008. Dickie&Moore Homes operates a policy of continual product development and the specifications outlined in this brochure are indicative only. Specifications are correct at time of going to print. Any alterations to the specifications will be of equal or greater value and Dickie&Moore reserves the right to implement changes to the specifications without warning. Whilst these particulars are prepared with all due care for the convenience of intending purchasers, the information is intended as a preliminary guide only. For more information, ask our Development Sales Manager. As with photographs/illustrations in this brochure, any display material is provided purely as a guide, indicating a typical style of a property. The computer generated images and photographs do not necessarily represent the actual finishings/elevation or treatments, furnishings and fittings at this development. Room measurements are approximate only. Floor plans, dimensions and specifications are correct at the time of print. The illustrated location map is a general guide only. For specific particulars, please speak to our Sales Advisor for the most up-to-date information. Please note that distances referred to in this brochure are obtained from Google Maps. For information relating to weather in the area of this development, please refer to the Meteorological Office ([www.metoffice.gov.uk](http://www.metoffice.gov.uk)). Nothing contained in this brochure shall constitute or form part of any contract. Information contained in this brochure is accurate at time of going to press November 2023.

Dickie&Moore Construction Ltd registered number is SC211045 and the registered office is 4 Orbital Court, East Kilbride, Glasgow, G74 5PH.





**DICKIE & MOORE**

[www.dickieandmoore.com](http://www.dickieandmoore.com)



**C O R U M**

**Corum Troon**

29 Portland Street, Troon, KA10 6AA

**T:** 01292 310 010

**E:** [troon@corumproperty.co.uk](mailto:troon@corumproperty.co.uk)

*Sell* with confidence

[corumproperty.co.uk](http://corumproperty.co.uk)

